



Office of Research &
Economic Development

NIH Research (R) Grants and the Peer Review Process

Graça Vicente

Special Assistant to VP of Research & Economic Development

Boyd Professor

Charles H. Barré Distinguished Professor of Chemistry

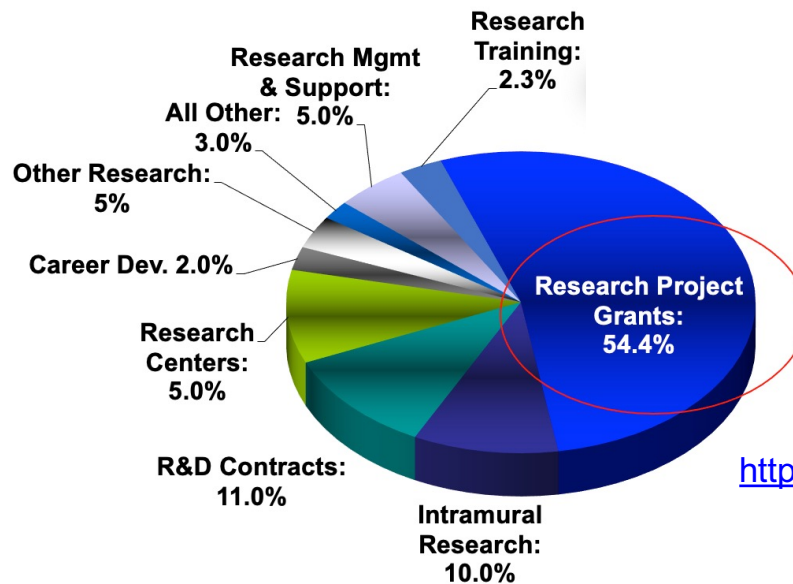
Louisiana State University

Baton Rouge, LA

3/30/2023



NIH operating budget (2022): ~45B

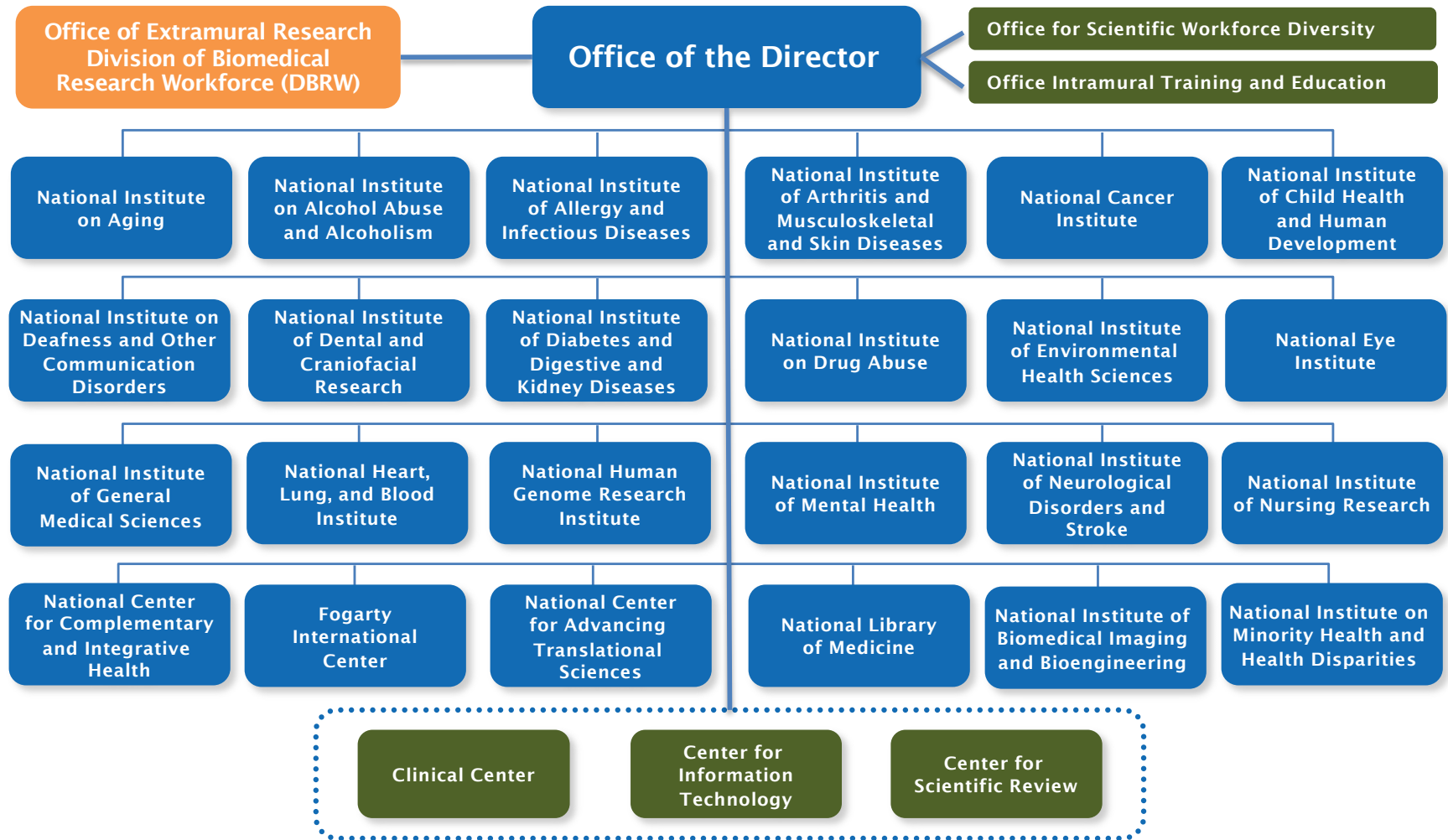


<http://officeofbudget.od.nih.gov/index.htm>

NIH Mission:

To seek fundamental knowledge about the nature and behavior of living systems and the application of that knowledge to enhance health, lengthen life, and reduce illness and disability.

NIH includes 27 Institutes and Centers (IC)





Where to Start?



GRANTS & FUNDING

NIH Central Resource for Grants and Funding Information

<https://grants.nih.gov>

Search this Site

eRA | NIH Staff | Glossary | FAQs | Help

HOME

ABOUT GRANTS

FUNDING

POLICY & COMPLIANCE

NEWS & EVENTS

ABOUT OER

2022-2023 NIH Grants Conference and PreCon Events

This conference season has concluded and resources are available.

Plans are underway for 2023-2024 virtual events - register today to stay informed:

- Webinars throughout the year
- Multi-day conference
- NIH and HHS expert guidance
- Institute, Center and Office contacts and resources

Learn More



How to Apply

Find Grant Funding

Funded Research (RePORT)

Open Mike Blog

News

ABOUT GRANTS

Navigate the NIH grants process.

- Grants Process Overview
- Get Started
- How to Apply

POLICY & COMPLIANCE

Learn about obligations of your grant award.

- NIH Grants Policy Statement
- Notices of Policy Changes
- Compliance and Oversight

INFORMATION FOR...

Find key resources just for you.

- Researchers
- Research Administrators
- Reviewers

Use RePORTER

NIH RePORT RePORTER FAQs API Sign In

<https://reporter.nih.gov>

Quick Search

 Search

Enter just about anything to find NIH projects and funding information: text, PI names, project numbers, fiscal year, agency

Welcome to the new NIH RePORTER
 Rebuilt from the ground up, leveraging the latest technologies, to bring you an enhanced experience. Faster performance, mobile ready, and an intuitive, all-new Quick Search brings the power of NIH RePORTER to your fingertips.

Guided Tour
Feedback

Active Funding by State

Select a state to view projects

Active Projects by Institute/Center

Select a bar to view projects for an Institute/Center

Institute/Center	Number of Active Projects
CT	100
CLC	100
FIC	500
NCATS	1000
NCCH	500
NCI	11000
NEI	2000
NHGRI	1000
NHLBI	8000
NIA	6500
NIAAA	1500
NIAD	10000
NIAMS	2000
NIBIB	1500
NICHD	4000
NIDA	3500
NIDCD	1500
NIDCR	1500
NIDDK	5500
NIHHS	1500
NIGMS	8500
NIMH	4500
NIMHD	1000
NINDS	6000
NINR	500
NLM	500
OD	1000

Advanced Projects Search

Fiscal Year ?

Current FY is 2021

Principal Investigator (PI) ?

PI Names or Profile IDs, semicolon ";" separated

Organization ?

Enter at least 3 characters to search

Matchmaker

Find potential Program Officials, ICs, and review panels for your research.

Get Started >

Use Matchmaker

NIH RePORT RePORTER FAQs

<https://reporter.nih.gov/matchmaker>

Quick Search

Enter just about anything to find NIH projects and funding information:
text, PI names, project numbers, fiscal year, agency

Welcome to the new NIH RePORTER
Rebuilt from the ground up, leveraging the latest technologies, to bring you an enhanced experience. Faster performance, mobile ready, and an intuitive, all-new Quick Search brings the power of NIH RePORTER to your fingertips.

Matchmaker Results

150 POs

Projects | Program Officials

Filters

- Active Projects
- > Fiscal Years
- > Agencies
- > Activity Codes
- > Program Officials
- > Study Sections

Institute/Center

Institute/Center	Program Officials
NIMH	35
NINDS	25
NIDA	25
NIA	20
NIGMS	10
NIAAA	5

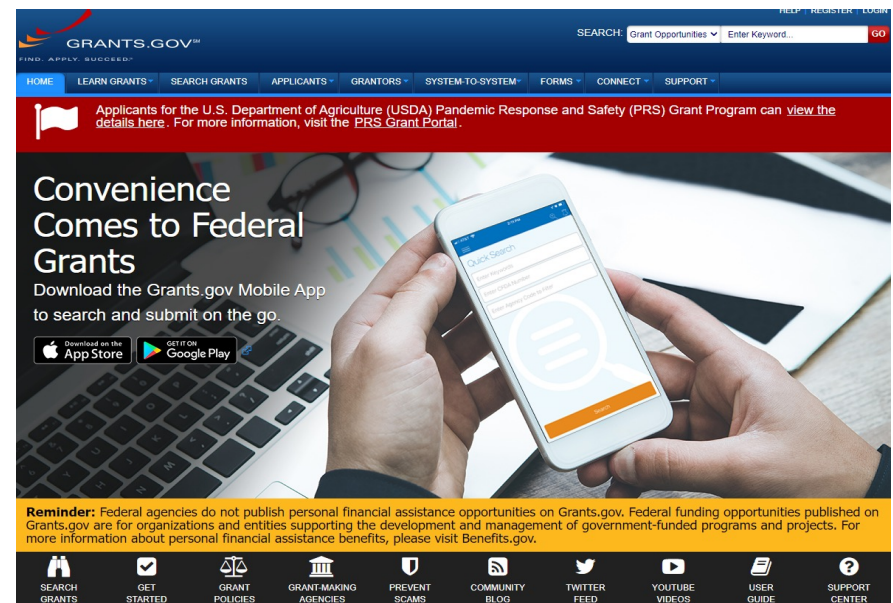
Activity Code

Activity Code	Program Officials
R01	45
R21	20
RF1	15
R15	15
R56	10
K99	5

Program Official	IC	Contact Information	Projects
GRABB, MARGARET C	NIMH	View Email <small>Contact info is hidden by default for privacy</small>	993
LIN, YU	NIDA	View Email	968
ROSSI, ANDREW	NIMH	View Email	947
ALVAREZ, RUBEN P	NIMH	View Email	926
WISE, BRADLEY C	NIA	View Email	788
MEINECKE, DOUGLAS L	NIMH	View Email	709

Search for FOA

- Review IC priorities and goals;
- Identify specific grant programs offered by each IC in NIH Guide for Grants & Contracts: <https://grants.nih.gov/funding/searchguide/index.html#/>
- Make early contact with program officers to ensure that their IC is the correct match;
- Find appropriate collaborators (complementary expertise).



Timeline for NIH Applications

Submission*	Review	Council	Award
February	Jun/July	October	December
June	Oct/Nov	January	April
October	Feb/Mar	May	July

*Resubmissions usually one month later

Types of NIH Grants Programs

- **Research Grants (R series, e.g. R01, R03, R21, R15, R35)**
- Career Development Awards (K series, e.g. K01, K99)
- Institutional Research Training (T series, e.g. T32, T34)
- Individual Fellowships (F series, e.g. F30, F31, F32)
- Program Project/Center Grants (P series, e.g. P01)
- Resource Grants (various series)

R01 Research Grant

- Provides funding for 5 years (\$500,000/year), renewable;
- **Requires preliminary data to support the proposed research;**
- Supports a variety of project types in areas representing the specific interests and competencies of the investigators;
- Proposed project must be related to the programmatic interests of one or more of the participating IC based on their scientific missions;
- **Includes 12 pages of Research Strategy.**

R01 Katz Award for ESI

- **First awards announced December 2021;**
- PD/PI must be designated as an ESI (within 10 yr of PhD; not a PI on an R award);
- Proposed research can rely on the prior work and expertise as foundation, but *must represent a different direction* (not just incremental expansion);
- Change in direction can involve a new approach, methodology, technique, discipline, therapeutic target, paradigm;
- **Should talk to your PO prior application;**
- Similar budget as regular R01: can request up to \$500K/year in direct costs.



R35 Maximizing Investigators Research Award (MIRA)

- Provides up to \$500,000/year, for up to 5 years, renewable;
- **Includes 6 pages of Research Strategy;**
- Enhances scientific breakthroughs but not all IC support this mechanism!
- Reduce time writing and reviewing grant applications and allow more time to conduct research, pursue new ideas;
- Enable investigators to develop new ideas in a stable research environment.

R35 MIRA Award for ESI

- Provides \$250,000/year for 5 years, renewable;
- Enables ESI to:
 - apply early in their independent careers;
 - Secure funding to launch successful research careers;
 - Enhance ability to move to new research areas distinct from mentors;
 - Allow more time dedicated to research.

R03 Small Grant Program

- Provides funding for 2 years (\$50,000/year), not renewable;
- **Includes 6 pages of Research Strategy**
- Supports a variety of project types, including:
 - Pilot or feasibility studies;
 - Development of new technology;
 - Collection of preliminary data;
 - Secondary analysis of existing data;
 - Small, self-contained research projects.

R21 Exploratory/Developmental Research

- Provides funding for 2 years (\$275,000 total), not renewable;
- Supports new, exploratory & developmental research projects;
- Support for early stages of project development;
- Preliminary data is not required, but may be included;
- **Only 6 pages Research Strategy!**
- Some R21 FOAs are issued by a IC for specific “exploratory” programs.

R15 Award

- Provides funding for 3 years (\$300,000 total), renewable;
- **Eligible Institutions: < \$6M/year, total NIH funding for 4 of the last 7 years;**
- PI cannot have another R grant at time of award!
- Preliminary data is not required, but may be included;
- Should strengthen the research environment of the institution;
- **Provides students with research training opportunities;**
- **Includes 12 pages Research Strategy!**

Two different R15 FOAs

- **AREA: Academic Research Enhancement Award**
 - Undergraduate-focused institutions (PAR-21-155)
- **REAP: Research Enhancement Award Program**
 - Health professional and Graduate Schools (PAR-19-135)

For AREA: Do the non-health professional components meet the funding requirement?

For REAP: Does the Institution as a whole meet the funding requirement?

<https://grants.nih.gov/grants/funding/r15.htm>

In R15 Student Training is Needed!

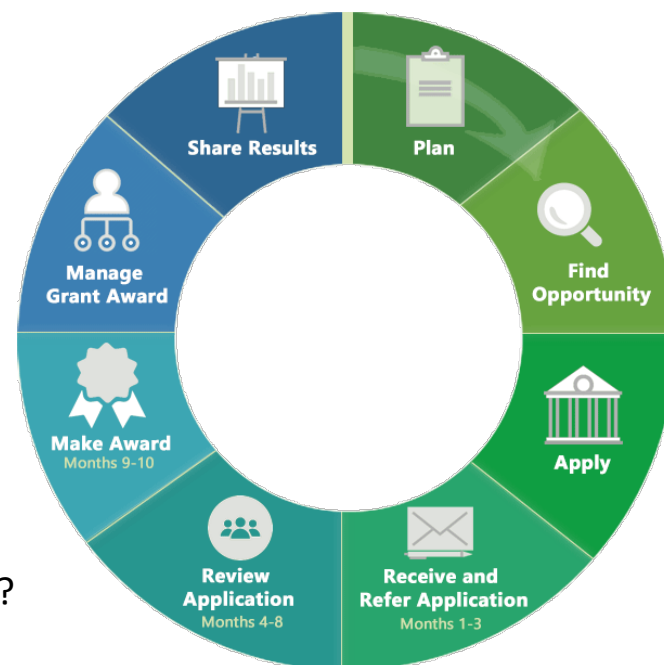
- Make sure students:
 - Have help designing experiments, collect and analyze data;
 - Co-author manuscripts;
 - Present at meetings / conferences.
- PI should describe:
 - History of mentoring students;
 - History of co-author papers with students;
 - How students will be recruited / retained.

Diversity Supplement to R Awards

- Administrative supplement to an existing, actively funded research grant designed to:
 - Diversify the biomedical research workforce via support of investigators from diverse and underrepresented groups;
 - Support many career stages from undergraduate to faculty;
 - Could be a bridge to an F or K award;
 - Expectation of a subsequent application for NIH support;
 - Add to ongoing research and career development;
 - Administratively reviewed by the Institute or Center (IC) funding the original grant.

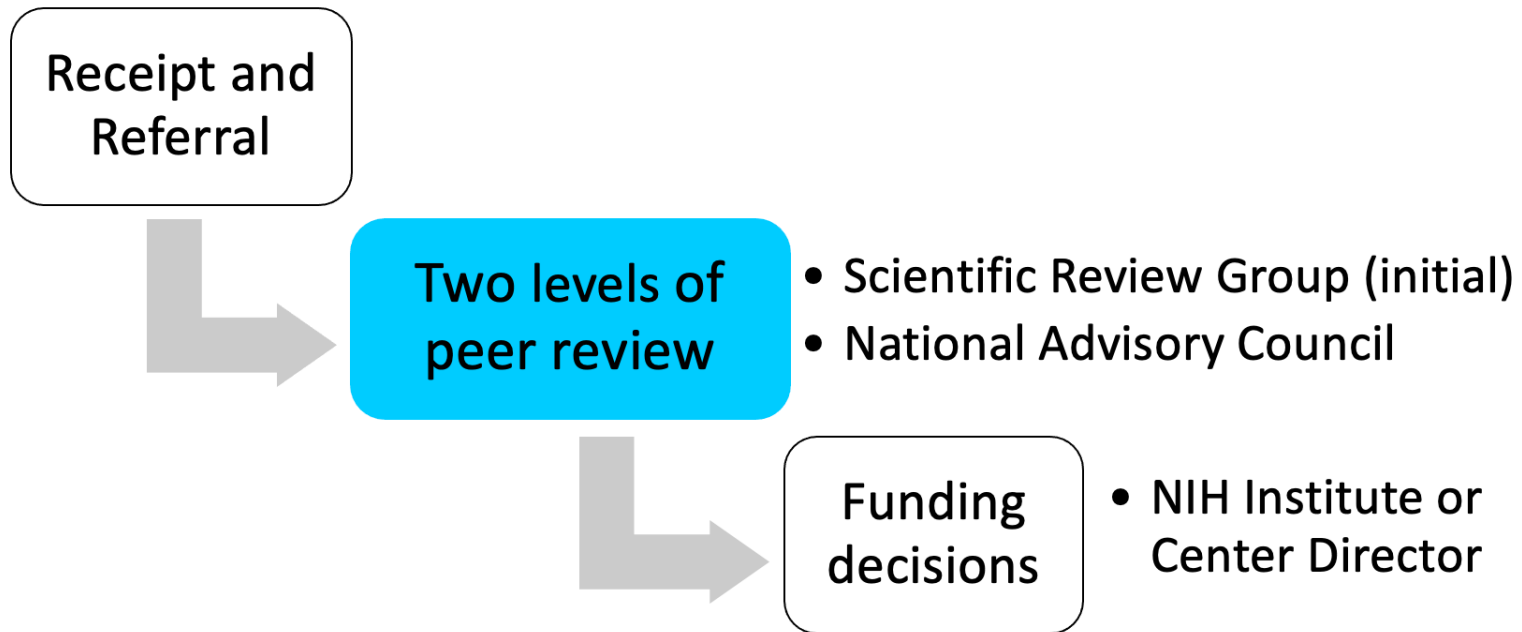
Working on a NIH Application

- Start planning early (6-8 months);
- Read the FOA carefully;
- Sketch out your Specific Aims;
- Check NIH RePORTER to identify IC, PO
- Reach out to a Program Officer to make sure:
 - Is this area appropriate for the IC?
 - Is the science a good fit for the funding announcement?
 - Who is likely to review my application?
 - Get feedback on your Specific Aims!
 - Recommended: e-mail PO your aims and set up a phone call
- Align your application with the Review Criteria (Significance, Innovation Approach, Investigators, Environment)



The Grant Life Cycle

What happens to your NIH application?



Peer Reviewers

- Mostly non-federal, extramural scientists;
- Recruited for expertise, managed conflicts of interest, balanced representation, stature in field, etc;
- For each application, \geq three reviewers are “assigned” for **in-depth assessment**, written critiques, and criterion scores
- Assignments and conflicts of interest are confidential!



Meeting Discussion Format

-----15 Minutes-----

CHAIR	Rule-out conflicts; Present an Application for review; Ask for Preliminary Impact Scores	
Reviewer 1	<ul style="list-style-type: none"> Reviewer #1 - Introduce and provide a concise review (do not discuss in detail) Describe the research program in terms of its likelihood to exert a sustained, powerful influence on the field Focus on major score driving strengths & weaknesses. Provide reasons for the Overall Impact score. Address additional review criteria such as Protections for Human Subjects, Gender/Minority/Children, Vertebrate Animals, Biohazards, Renewal 	
Reviewers 2 & 3	<ul style="list-style-type: none"> Discuss areas of concurrence or disagreement with the previous reviewer's comments Focus on additional comments or differences of opinion; Score driving strengths & weaknesses and reasons for your Overall Impact score 	
PANEL DISCUSSION	<p><u>Chair invites the panel members to discuss</u></p> <ul style="list-style-type: none"> All members are asked to participate in the discussion - ask questions, provide additional comments If anyone plans to vote outside the range, participate in the discussion now! 	
Summary	Chair summarizes the discussion, noting where consensus is apparent and where differences of opinion remain	
Final Scoring	<ol style="list-style-type: none"> Final Overall Impact Score (Your initial/preliminary impact score is NOT binding) Everyone in the room must vote online at IAR Site Chair ask reviewers if anyone interested to vote outside the final Overall Impact Score range of the primary reviewers (must provide reasons for voting differently) 	
After Scoring, evaluate acceptability of:	<ul style="list-style-type: none"> Resource Sharing Plans (Data Sharing Plan; Sharing Model Organisms; and GWAS) Foreign Components Authentication of Key Resources 	<ul style="list-style-type: none"> Select Agent Research (hazardous biological agents and toxins) Budget and Period of Support (justifications for period of support)

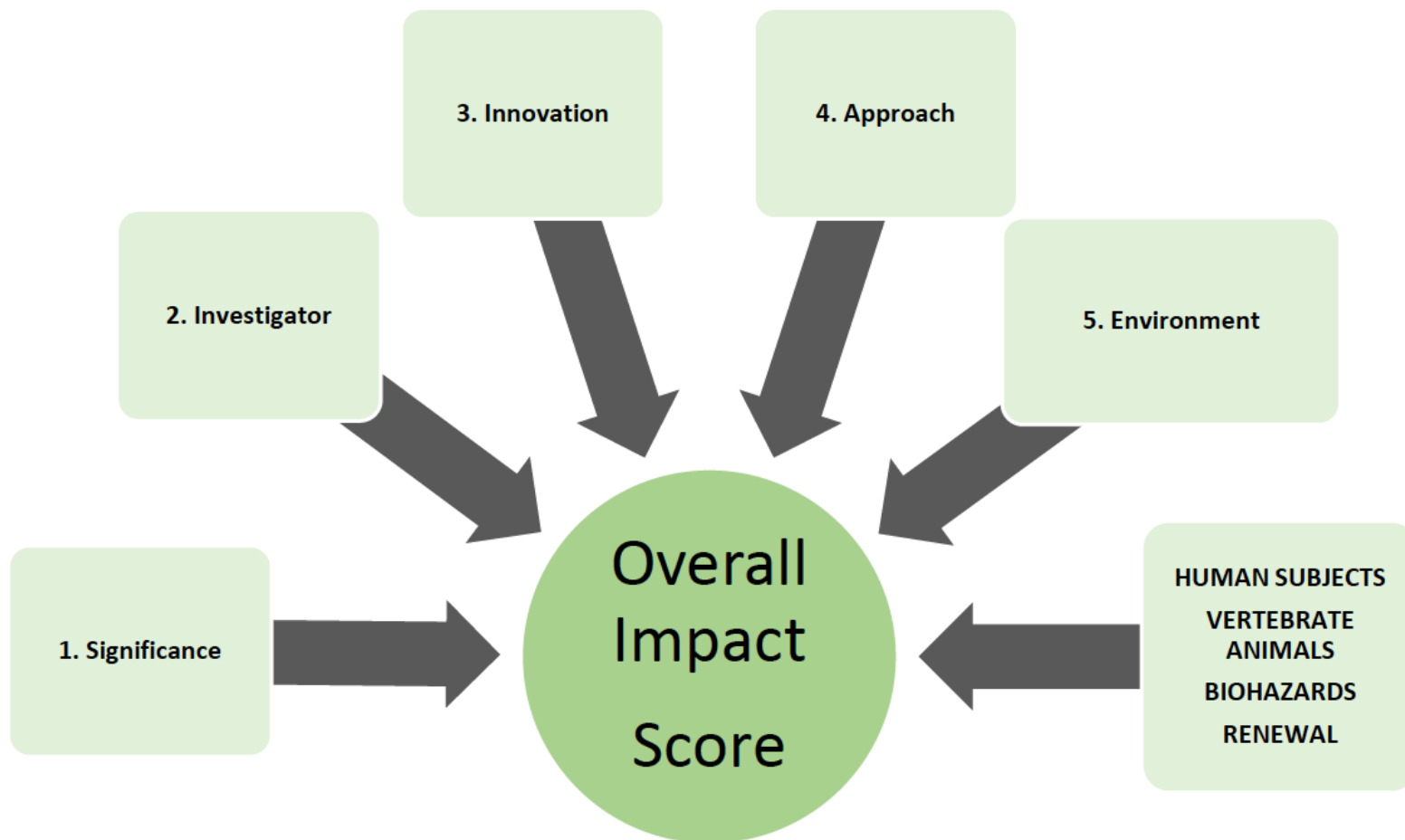
Overall Impact or Criterion Strength	Score	Descriptor	Additional Guidance on Strengths and weaknesses
High	1	Exceptional	Applications with No weaknesses or Negligible weaknesses that do not affect the Impact
	2	Outstanding	
	3	Excellent	
Medium	4	Very Good	Strong but easily addressable minor weaknesses
	5	Good	Strong with at least one minor weakness
	6	Satisfactory	Some strengths with some moderate weaknesses
Low	7	Fair	Some strengths with at least one major weakness
	8	Marginal	A few strengths and a few major weaknesses
	9	Poor	Very few strengths and many major weaknesses
Other Designations for Final Outcome			
AB	Abstention	Minor Weakness: Doesn't substantially lessen Impact Moderate Weakness: Lessens Impact Major Weakness: Severely limits Impact	
CF	Conflict of Interest		
DF	Deferred		
ND	Not Discussed		
NP	Not Present		
NR	Not Recommended for Further Consideration		



NIH scores are percentiled!

- In making funding decisions, NIH institutes consider *percentiles*, not overall impact scores;
- The scores helps to rank applications and percentiles are a function of rank;
- Calculation of percentiles uses the rank, not the score itself:
Percentile = 100 (Rank-0.5)/Total # of applications in 3 rounds

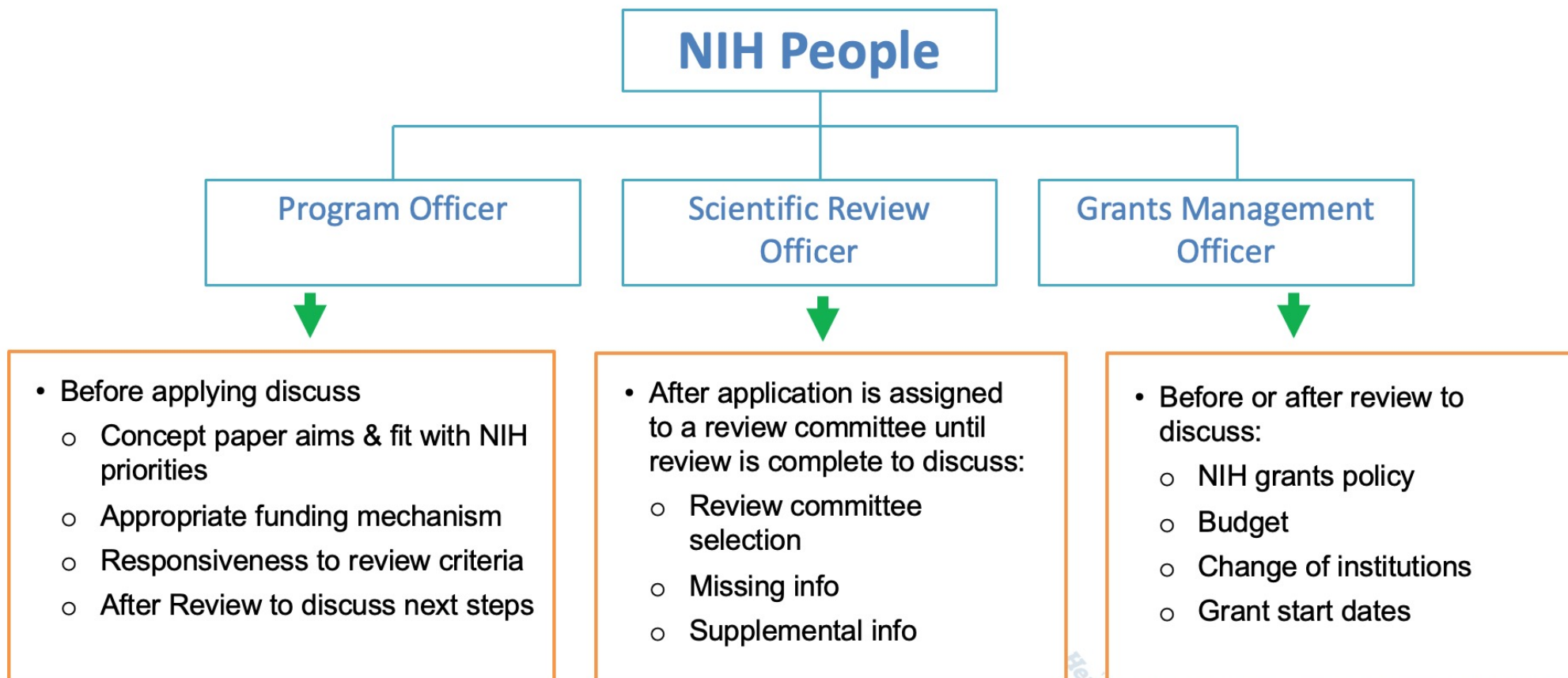
Reviewer's overall assessment of :



After the Application Review

- You may need to:
 - Submit Just-in-Time (JIT) information
 - Resolve human subject, vertebrate animal, inclusion codes
 - Consider your options:
 - Submit a new application
 - Revise and resubmit your application
 - Appeal the review outcome ([NOT-OD-11-064](#))

When/Who to call at NIH



Questions?



vicente@lsu.edu